



Certificate of Analysis

QA SAMPLE - INFORMATIONAL ONLY

1 of 3

ICAL ID: 20231219-001
Sample: CA231218-025-063
DOPE WM 16oz
Strain: DOPE WM 16oz
Category: Ingestible
Type: Beverage

DOPE Drinks
Lic. #
N/A
San Diego, CA 92121
Lic. #

Batch#: 001
Batch Size Collected:
Total Batch Size:
Collected: 12/20/2023; Received: 12/20/2023
Completed: 12/20/2023

Moisture NT Water Activity NT	Δ9-THC 5.13 mg/unit	CBD 5.29 mg/unit	Total Cannabinoids 10.42 mg/unit	Total Terpenes NT
--	-------------------------------	----------------------------	--	----------------------

Summary	SOP Used	Date Tested	
Batch	POT-PREP-002	12/19/2023	Pass
Cannabinoids	RS-PREP-001		Complete
Residual Solvents	MICRO-PREP-001		Complete
Microbials	PESTMICO-LC-PREP-001		Complete
Mycotoxins	HM-PREP-001	12/19/2023	Pass
Heavy Metals	PESTMICO-LC-PREP-001 /		Complete
Pesticides	PEST-GC-PREP-001		Complete



Scan to see results

Cannabinoid Profile

1 Unit = can, 480.25 g. 1 mL = 1 g.

Analyte	LOQ (mg/g)	LOD (mg/g)	%	mg/g	mg/mL	mg/unit	Analyte	LOQ (mg/g)	LOD (mg/g)	%	mg/g	mg/mL	mg/unit
THCa	0.0128	0.0043	ND	ND	ND	ND	CBGa	0.0046	0.0015	ND	ND	ND	ND
Δ9-THC	0.0046	0.0010	0.001	0.01	0.01	5.13	CBG	0.0046	0.0005	ND	ND	ND	ND
Δ8-THC	0.0046	0.0014	ND	ND	ND	ND	CBN	0.0046	0.0005	ND	ND	ND	ND
THCV	0.0046	0.0006	ND	ND	ND	ND	Total THC			0.00	0.01	0.01	5.13
CBDa	0.0049	0.0016	ND	ND	ND	ND	Total CBD			0.00	0.01	0.01	5.29
CBD	0.0046	0.0008	0.001	0.01	0.01	5.29	Total			0.00	0.02	0.02	10.42
CBDV	0.0046	0.0004	ND	ND	ND	ND							
CBC	0.0076	0.0025	ND	ND	ND	ND							

Total THC=THCa * 0.877 + Δ9-THC + Δ8-THC + Δ8-THC; Total CBD = CBDa * 0.877 + CBD. LOD= Limit of Detection, LOQ= Limit of Quantitation, ND= Not Detected, NR= Not Reported. Potency is reported on a dry weight basis. Instrumentation and analysis SOPs used: Cannabinoids:UHPLC-DAD(POT-INST-005),Moisture:Moisture Analyzer(MOISTURE-001),Water Activity:Water Activity Meter(WA-INST-002), Foreign Material:Microscope(FOREIGN-001). Density measured at 19-24 °C, Water Activity measured at 0-90% RH. All QA submitted by the client, All CA State Compliance sampled using SAMPL-SOP-001.

Terpene Profile

Analyte	LOQ (mg/g)	LOD (mg/g)	%	mg/g	Analyte	LOQ (mg/g)	LOD (mg/g)	%	mg/g
---------	------------	------------	---	------	---------	------------	------------	---	------

NR= Not Reported (no analysis was performed), ND= Not Detected (the concentration is less than the Limit of Detection (LOD)). Analytical instrumentation used: HS-GC-MS; samples analyzed according to SOP TERP-INST-003.



Infinite Chemical Analysis Labs
8312 Miramar Mall
San Diego, CA
(858) 623-2740
www.infiniteCAL.com
Lic# C8-000047-LIC

Josh M Swider

Josh Swider
Lab Director, Managing Partner
12/20/2023

Confident LIMS
All Rights Reserved
coa.support@confidentlims.com
(866) 506-5866
www.confidentlims.com



This product has been tested by Infinite Chemical Analysis, LLC using valid testing methodologies and a quality system as required by state law. All LQC samples were performed and met the prescribed acceptance criteria in 16 CCR section 15730, pursuant to 16 CCR section 15726(e)(13). Values reported relate only to the product tested. Infinite Chemical Analysis, LLC makes no claims as to the efficacy, safety or other risks associated with any detected or non-detected levels of any compounds reported herein. This Certificate shall not be reproduced except in full, without the written approval of Infinite Chemical Analysis, LLC.



Certificate of Analysis

QA SAMPLE - INFORMATIONAL ONLY

2 of 3

ICAL ID: 20231219-001
Sample: CA231218-025-063
DOPE WM 16oz
Strain: DOPE WM 16oz
Category: Ingestible
Type: Beverage

DOPE Drinks
Lic. #
N/A
San Diego, CA 92121
Lic. #

Batch#: 001
Batch Size Collected:
Total Batch Size:
Collected: 12/20/2023; Received: 12/20/2023
Completed: 12/20/2023

Residual Solvent Analysis

Category 1	LOQ	LOD	Limit	Status	Category 2	LOQ	LOD	Limit	Status	Category 2	LOQ	LOD	Limit	Status			
	µg/g	µg/g	µg/g	µg/g		µg/g	µg/g	µg/g	µg/g		µg/g	µg/g	µg/g	µg/g			
1,2-Dichloro-Ethane	NR	0.264	0.088	1	NT	Acetone	NR	51.246	0.716	5000	NT	n-Hexane	NR	0.281	0.027	290	NT
Benzene	NR	0.052	0.017	1	NT	Acetonitrile	NR	0.42	0.14	410	NT	Isopropanol	NR	2.86	0.614	5000	NT
Chloroform	NR	0.076	0.025	1	NT	Butane	NR	4.849	0.748	5000	NT	Methanol	NR	2.602	0.867	3000	NT
Ethylene Oxide	NR	0.579	0.179	1	NT	Ethanol	NR	7.575	2.525	5000	NT	Pentane	NR	5.075	1.692	5000	NT
Methylene-Chloride	NR	0.729	0.08	1	NT	Ethyl-Acetate	NR	2.288	0.175	5000	NT	Propane	NR	9.709	3.236	5000	NT
Trichloroethene	NR	0.145	0.028	1	NT	Ethyl-Ether	NR	2.869	0.389	5000	NT	Toluene	NR	0.864	0.067	890	NT
						Heptane	NR	2.859	0.496	5000	NT	Xylenes	NR	2.572	0.326	2170	NT

NR= Not Reported (no analysis was performed), ND= Not Detected (the concentration is less than the Limit of Detection (LOD)). Analytical instrumentation used: HS-GC-MS; samples analyzed according to SOP RS-INST-003.

Heavy Metal Screening

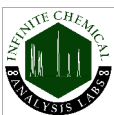
	LOQ	LOD	Limit	Status	
µg/g	µg/g	µg/g	µg/g		
Arsenic	ND	0.009	0.003	1.5	Pass
Cadmium	ND	0.002	0.001	0.5	Pass
Lead	ND	0.004	0.001	0.5	Pass
Mercury	ND	0.014	0.005	1.5	Pass

NR= Not Reported (no analysis was performed), ND= Not Detected (the concentration is less than the Limit of Detection (LOD)). Analytical instrumentation used: ICP-MS; samples analyzed according to SOP HM-INST-003.

Microbiological Screening

Limit	Result	Status
CFU/g	CFU/g	
Aspergillus flavus	NR	NT
Aspergillus fumigatus	NR	NT
Aspergillus niger	NR	NT
Aspergillus terreus	NR	NT
STEC	NR	NT
Salmonella SPP	NR	NT

ND=Not Detected. Analytical instrumentation used:qPCR; samples analyzed according to SOP MICRO-INST-001.



Infinite Chemical Analysis Labs
8312 Miramar Mall
San Diego, CA
(858) 623-2740
www.infiniteCAL.com
Lic# C8-0000047-LIC

Josh M Swider

Josh Swider
Lab Director, Managing Partner
12/20/2023

Confident LIMS
All Rights Reserved
coa.support@confidentlims.com
(866) 506-5866
www.confidentlims.com



This product has been tested by Infinite Chemical Analysis, LLC using valid testing methodologies and a quality system as required by state law. All LQC samples were performed and met the prescribed acceptance criteria in 16 CCR section 15730, pursuant to 16 CCR section 15726(e)(13). Values reported relate only to the product tested. Infinite Chemical Analysis, LLC makes no claims as to the efficacy, safety or other risks associated with any detected or non-detected levels of any compounds reported herein. This Certificate shall not be reproduced except in full, without the written approval of Infinite Chemical Analysis, LLC.



Certificate of Analysis

QA SAMPLE - INFORMATIONAL ONLY

3 of 3

ICAL ID: 20231219-001
Sample: CA231218-025-063
DOPE WM 16oz
Strain: DOPE WM 16oz
Category: Ingestible
Type: Beverage

DOPE Drinks
Lic. #
N/A
San Diego, CA 92121
Lic. #

Batch#: 001
Batch Size Collected:
Total Batch Size:
Collected: 12/20/2023; Received: 12/20/2023
Completed: 12/20/2023

Chemical Residue Screening

Category 1	LOQ	LOD	Status	Mycotoxins	LOQ	LOD	Limit	Status		
	µg/g	µg/g	µg/g		µg/kg	µg/kg	µg/kg			
Aldicarb	NR	0.065	0.022	NT	B1	NR	7.88	2.6	NT	
Carbofuran	NR	0.030	0.009	NT	B2	NR	6.18	2.04	NT	
Chlordane	NR	0.075	0.025	NT	G1	NR	8.99	2.97	NT	
Chlorfenapyr	NR	0.075	0.025	NT	G2	NR	5.72	1.89	NT	
Chlorpyrifos	NR	0.053	0.018	NT	Ochratoxin A	NR	11.72	3.87	20	NT
Coumaphos	NR	0.056	0.018	NT	Total Aflatoxins	NR		20	NT	
Daminozide	NR	0.079	0.026	NT						
Dichlorvos	NR	0.067	0.022	NT						
Dimethoate	NR	0.036	0.012	NT						
Ethoprophos	NR	0.053	0.017	NT						
Etofenprox	NR	0.030	0.008	NT						
Fenoxycarb	NR	0.043	0.014	NT						
Fipronil	NR	0.045	0.015	NT						
Imazalil	NR	0.047	0.016	NT						
Methiocarb	NR	0.047	0.016	NT						
Mevinphos	NR	0.042	0.014	NT						
Paclbutrazol	NR	0.040	0.013	NT						
Parathion Methyl	NR	0.024	0.008	NT						
Propoxur	NR	0.047	0.016	NT						
Spiroxamine	NR	0.032	0.011	NT						
Thiacloprid	NR	0.042	0.014	NT						

Category 2	LOQ	LOD	Limit	Status	Category 2	LOQ	LOD	Limit	Status		
	µg/g	µg/g	µg/g	µg/g		µg/g	µg/g	µg/g	µg/g		
Abamectin	NR	0.030	0.010	0.3	NT	Kresoxim Methyl	NR	0.038	0.012	1	NT
Acephate	NR	0.050	0.016	5	NT	Malathion	NR	0.035	0.012	5	NT
Acequinocyl	NR	0.059	0.019	4	NT	Metalaxyl	NR	0.031	0.010	15	NT
Acetamiprid	NR	0.044	0.015	5	NT	Methomyl	NR	0.048	0.016	0.1	NT
Azoxystrobin	NR	0.029	0.010	40	NT	Myclobutanil	NR	0.055	0.018	9	NT
Bifenazate	NR	0.035	0.012	5	NT	Naled	NR	0.051	0.017	0.5	NT
Bifenthrin	NR	0.040	0.013	0.5	NT	Oxamyl	NR	0.046	0.015	0.3	NT
Boscalid	NR	0.060	0.020	10	NT	Pentachloronitrobenzene	NR	0.054	0.018	0.2	NT
Captan	NR	0.358	0.120	5	NT	Permethrin	NR	0.030	0.008	20	NT
Carbaryl	NR	0.049	0.016	0.5	NT	Phosmet	NR	0.038	0.012	0.2	NT
Chlorantraniliprole	NR	0.063	0.021	40	NT	Piperonyl Butoxide	NR	0.030	0.008	8	NT
Clofentazine	NR	0.039	0.013	0.5	NT	Prallethrin	NR	0.068	0.023	0.4	NT
Cyfluthrin	NR	0.056	0.019	1	NT	Propiconazole	NR	0.059	0.019	20	NT
Cypermethrin	NR	0.044	0.015	1	NT	Pyrethrins	NR	0.030	0.004	1	NT
Diazinon	NR	0.030	0.006	0.2	NT	Pyridaben	NR	0.035	0.012	3	NT
Dimethomorph	NR	0.042	0.014	20	NT	Spinetoram	NR	0.030	0.006	3	NT
Etoxazole	NR	0.030	0.008	1.5	NT	Spinosad	NR	0.030	0.004	3	NT
Fenhexamid	NR	0.039	0.013	10	NT	Spiromesifen	NR	0.042	0.014	12	NT
Fenpyroximate	NR	0.030	0.010	2	NT	Spirotetramat	NR	0.041	0.013	13	NT
Flonicamid	NR	0.081	0.027	2	NT	Tebuconazole	NR	0.044	0.014	2	NT
Fludioxonil	NR	0.046	0.015	30	NT	Thiamethoxam	NR	0.055	0.018	4.5	NT
Hexythiazox	NR	0.078	0.026	2	NT	Trifloxystrobin	NR	0.031	0.010	30	NT
Imidacloprid	NR	0.071	0.023	3	NT						

Other Analyte(s):

NR= Not Reported (no analysis was performed), ND= Not Detected (the concentration is less than the Limit of Detection (LOD)). Analytical instrumentation used: LC-MS-MS & GC-MS-MS; samples analyzed according to SOPs PESTMYCO-LC-INST-004 and PEST-GC-INST-003.



Infinite Chemical Analysis Labs
8312 Miramar Mall
San Diego, CA
(858) 623-2740
www.infiniteCAL.com
Lic# C8-000047-LIC

Josh M Swider

Josh Swider
Lab Director, Managing Partner
12/20/2023

Confident LIMS
All Rights Reserved
coa.support@confidentlims.com
(866) 506-5866
www.confidentlims.com



This product has been tested by Infinite Chemical Analysis, LLC using valid testing methodologies and a quality system as required by state law. All LQC samples were performed and met the prescribed acceptance criteria in 16 CCR section 15730, pursuant to 16 CCR section 15726(e)(13). Values reported relate only to the product tested. Infinite Chemical Analysis, LLC makes no claims as to the efficacy, safety or other risks associated with any detected or non-detected levels of any compounds reported herein. This Certificate shall not be reproduced except in full, without the written approval of Infinite Chemical Analysis, LLC.



Certificate of Analysis

QA SAMPLE - INFORMATIONAL ONLY

1 of 3

ICAL ID: 20231219-002
Sample: CA231218-025-064
DOPE PA 16oz
Strain: DOPE PA 16oz
Category: Ingestible
Type: Beverage

DOPE Drinks
Lic. #
N/A
San Diego, CA 92121
Lic. #

Batch#: 001
Batch Size Collected:
Total Batch Size:
Collected: 12/20/2023; Received: 12/20/2023
Completed: 12/20/2023

Moisture NT Water Activity NT	Δ9-THC 4.73 mg/unit	CBD 5.10 mg/unit	Total Cannabinoids 9.83 mg/unit	Total Terpenes NT
--	-------------------------------	----------------------------	---	----------------------

Summary	SOP Used	Date Tested	
Batch	POT-PREP-002	12/19/2023	Pass
Cannabinoids	RS-PREP-001		Complete
Residual Solvents	MICRO-PREP-001		Complete
Microbials	PESTMICO-LC-PREP-001		Complete
Mycotoxins	HM-PREP-001	12/19/2023	Pass
Heavy Metals	PESTMICO-LC-PREP-001 /		Complete
Pesticides	PEST-GC-PREP-001		Complete



Scan to see results

Cannabinoid Profile

1 Unit = can, 477.81 g. 1 mL = 1 g.

Analyte	LOQ (mg/g)	LOD (mg/g)	%	mg/g	mg/mL	mg/unit	Analyte	LOQ (mg/g)	LOD (mg/g)	%	mg/g	mg/mL	mg/unit
THCa	0.0128	0.0043	ND	ND	ND	ND	CBGa	0.0046	0.0015	ND	ND	ND	ND
Δ9-THC	0.0046	0.0010	0.001	0.01	0.01	4.73	CBG	0.0046	0.0005	ND	ND	ND	ND
Δ8-THC	0.0046	0.0014	ND	ND	ND	ND	CBN	0.0046	0.0005	ND	ND	ND	ND
THCV	0.0046	0.0006	ND	ND	ND	ND	Total THC			0.00	0.01	0.01	4.73
CBDa	0.0049	0.0016	ND	ND	ND	ND	Total CBD			0.00	0.01	0.01	5.10
CBD	0.0046	0.0008	0.001	0.01	0.01	5.10	Total			0.00	0.02	0.02	9.83
CBDV	0.0046	0.0004	ND	ND	ND	ND							
CBC	0.0076	0.0025	ND	ND	ND	ND							

Total THC=THCa * 0.877 + Δ9-THC + Δ8-THC + Δ8-THC; Total CBD = CBDa * 0.877 + CBD. LOD= Limit of Detection, LOQ= Limit of Quantitation, ND= Not Detected, NR= Not Reported. Potency is reported on a dry weight basis. Instrumentation and analysis SOPs used: Cannabinoids:UHPLC-DAD(POT-INST-005),Moisture:Moisture Analyzer(MOISTURE-001),Water Activity:Water Activity Meter(WA-INST-002), Foreign Material:Microscope(FOREIGN-001). Density measured at 19-24 °C, Water Activity measured at 0-90% RH. All QA submitted by the client, All CA State Compliance sampled using SAMPL-SOP-001.

Terpene Profile

Analyte	LOQ (mg/g)	LOD (mg/g)	%	mg/g	Analyte	LOQ (mg/g)	LOD (mg/g)	%	mg/g
---------	------------	------------	---	------	---------	------------	------------	---	------

NR= Not Reported (no analysis was performed), ND= Not Detected (the concentration is less than the Limit of Detection (LOD)). Analytical instrumentation used: HS-GC-MS; samples analyzed according to SOP TERP-INST-003.



Infinite Chemical Analysis Labs
8312 Miramar Mall
San Diego, CA
(858) 623-2740
www.infiniteCAL.com
Lic# C8-000047-LIC

Josh M Swider

Josh Swider
Lab Director, Managing Partner
12/20/2023

Confident LIMS
All Rights Reserved
coa.support@confidentlims.com
(866) 506-5866
www.confidentlims.com



This product has been tested by Infinite Chemical Analysis, LLC using valid testing methodologies and a quality system as required by state law. All LQC samples were performed and met the prescribed acceptance criteria in 16 CCR section 15730, pursuant to 16 CCR section 15726(e)(13). Values reported relate only to the product tested. Infinite Chemical Analysis, LLC makes no claims as to the efficacy, safety or other risks associated with any detected or non-detected levels of any compounds reported herein. This Certificate shall not be reproduced except in full, without the written approval of Infinite Chemical Analysis, LLC.



Certificate of Analysis

QA SAMPLE - INFORMATIONAL ONLY

2 of 3

ICAL ID: 20231219-002
Sample: CA231218-025-064
DOPE PA 16oz
Strain: DOPE PA 16oz
Category: Ingestible
Type: Beverage

DOPE Drinks
Lic. #
N/A
San Diego, CA 92121
Lic. #

Batch#: 001
Batch Size Collected:
Total Batch Size:
Collected: 12/20/2023; Received: 12/20/2023
Completed: 12/20/2023

Residual Solvent Analysis

Category 1	LOQ	LOD	Limit	Status	Category 2	LOQ	LOD	Limit	Status	Category 2	LOQ	LOD	Limit	Status			
	µg/g	µg/g	µg/g	µg/g		µg/g	µg/g	µg/g	µg/g		µg/g	µg/g	µg/g	µg/g			
1,2-Dichloro-Ethane	NR	0.264	0.088	1	NT	Acetone	NR	51.246	0.716	5000	NT	n-Hexane	NR	0.281	0.027	290	NT
Benzene	NR	0.052	0.017	1	NT	Acetonitrile	NR	0.42	0.14	410	NT	Isopropanol	NR	2.86	0.614	5000	NT
Chloroform	NR	0.076	0.025	1	NT	Butane	NR	4.849	0.748	5000	NT	Methanol	NR	2.602	0.867	3000	NT
Ethylene Oxide	NR	0.579	0.179	1	NT	Ethanol	NR	7.575	2.525	5000	NT	Pentane	NR	5.075	1.692	5000	NT
Methylene-Chloride	NR	0.729	0.08	1	NT	Ethyl-Acetate	NR	2.288	0.175	5000	NT	Propane	NR	9.709	3.236	5000	NT
Trichloroethene	NR	0.145	0.028	1	NT	Ethyl-Ether	NR	2.869	0.389	5000	NT	Toluene	NR	0.864	0.067	890	NT
						Heptane	NR	2.859	0.496	5000	NT	Xylenes	NR	2.572	0.326	2170	NT

NR= Not Reported (no analysis was performed), ND= Not Detected (the concentration is less than the Limit of Detection (LOD)). Analytical instrumentation used: HS-GC-MS; samples analyzed according to SOP RS-INST-003.

Heavy Metal Screening

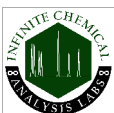
	LOQ	LOD	Limit	Status	
µg/g	µg/g	µg/g	µg/g		
Arsenic	ND	0.009	0.003	1.5	Pass
Cadmium	ND	0.002	0.001	0.5	Pass
Lead	ND	0.004	0.001	0.5	Pass
Mercury	ND	0.014	0.005	1.5	Pass

NR= Not Reported (no analysis was performed), ND= Not Detected (the concentration is less than the Limit of Detection (LOD)). Analytical instrumentation used: ICP-MS; samples analyzed according to SOP HM-INST-003.

Microbiological Screening

	Limit	Result	Status
	CFU/g	CFU/g	
Aspergillus flavus		NR	NT
Aspergillus fumigatus		NR	NT
Aspergillus niger		NR	NT
Aspergillus terreus		NR	NT
STEC		NR	NT
Salmonella SPP		NR	NT

ND=Not Detected. Analytical instrumentation used:qPCR; samples analyzed according to SOP MICRO-INST-001.



Infinite Chemical Analysis Labs
8312 Miramar Mall
San Diego, CA
(858) 623-2740
www.infiniteCAL.com
Lic# C8-0000047-LIC

Josh M Swider

Josh Swider
Lab Director, Managing Partner
12/20/2023

Confident LIMS
All Rights Reserved
coa.support@confidentlims.com
(866) 506-5866
www.confidentlims.com



This product has been tested by Infinite Chemical Analysis, LLC using valid testing methodologies and a quality system as required by state law. All LQC samples were performed and met the prescribed acceptance criteria in 16 CCR section 15730, pursuant to 16 CCR section 15726(e)(13). Values reported relate only to the product tested. Infinite Chemical Analysis, LLC makes no claims as to the efficacy, safety or other risks associated with any detected or non-detected levels of any compounds reported herein. This Certificate shall not be reproduced except in full, without the written approval of Infinite Chemical Analysis, LLC.



Certificate of Analysis

QA SAMPLE - INFORMATIONAL ONLY

3 of 3

ICAL ID: 20231219-002
Sample: CA231218-025-064
DOPE PA 16oz
Strain: DOPE PA 16oz
Category: Ingestible
Type: Beverage

DOPE Drinks
Lic. #
N/A
San Diego, CA 92121
Lic. #

Batch#: 001
Batch Size Collected:
Total Batch Size:
Collected: 12/20/2023; Received: 12/20/2023
Completed: 12/20/2023

Chemical Residue Screening

Category 1	LOQ	LOD	Status	Mycotoxins	LOQ	LOD	Limit	Status		
	µg/g	µg/g	µg/g		µg/kg	µg/kg	µg/kg			
Aldicarb	NR	0.065	0.022	NT	B1	NR	7.88	2.6	NT	
Carbofuran	NR	0.030	0.009	NT	B2	NR	6.18	2.04	NT	
Chlordane	NR	0.075	0.025	NT	G1	NR	8.99	2.97	NT	
Chlorfenapyr	NR	0.075	0.025	NT	G2	NR	5.72	1.89	NT	
Chlorpyrifos	NR	0.053	0.018	NT	Ochratoxin A	NR	11.72	3.87	20	NT
Coumaphos	NR	0.056	0.018	NT	Total Aflatoxins	NR		20	NT	
Daminozide	NR	0.079	0.026	NT						
Dichlorvos	NR	0.067	0.022	NT						
Dimethoate	NR	0.036	0.012	NT						
Ethoprophos	NR	0.053	0.017	NT						
Etofenprox	NR	0.030	0.008	NT						
Fenoxycarb	NR	0.043	0.014	NT						
Fipronil	NR	0.045	0.015	NT						
Imazalil	NR	0.047	0.016	NT						
Methiocarb	NR	0.047	0.016	NT						
Mevinphos	NR	0.042	0.014	NT						
Pacloutrazol	NR	0.040	0.013	NT						
Parathion Methyl	NR	0.024	0.008	NT						
Propoxur	NR	0.047	0.016	NT						
Spiroxamine	NR	0.032	0.011	NT						
Thiacloprid	NR	0.042	0.014	NT						

Category 2	LOQ	LOD	Limit	Status	Category 2	LOQ	LOD	Limit	Status		
	µg/g	µg/g	µg/g	µg/g		µg/g	µg/g	µg/g	µg/g		
Abamectin	NR	0.030	0.010	0.3	NT	Kresoxim Methyl	NR	0.038	0.012	1	NT
Acephate	NR	0.050	0.016	5	NT	Malathion	NR	0.035	0.012	5	NT
Acequinocyl	NR	0.059	0.019	4	NT	Metalaxyl	NR	0.031	0.010	15	NT
Acetamiprid	NR	0.044	0.015	5	NT	Methomyl	NR	0.048	0.016	0.1	NT
Azoxystrobin	NR	0.029	0.010	40	NT	Myclobutanil	NR	0.055	0.018	9	NT
Bifenazate	NR	0.035	0.012	5	NT	Naled	NR	0.051	0.017	0.5	NT
Bifenthrin	NR	0.040	0.013	0.5	NT	Oxamyl	NR	0.046	0.015	0.3	NT
Boscalid	NR	0.060	0.020	10	NT	Pentachloronitrobenzene	NR	0.054	0.018	0.2	NT
Captan	NR	0.358	0.120	5	NT	Permethrin	NR	0.030	0.008	20	NT
Carbaryl	NR	0.049	0.016	0.5	NT	Phosmet	NR	0.038	0.012	0.2	NT
Chlorantraniliprole	NR	0.063	0.021	40	NT	Piperonyl Butoxide	NR	0.030	0.008	8	NT
Clofentazine	NR	0.039	0.013	0.5	NT	Prallethrin	NR	0.068	0.023	0.4	NT
Cyfluthrin	NR	0.056	0.019	1	NT	Propiconazole	NR	0.059	0.019	20	NT
Cypermethrin	NR	0.044	0.015	1	NT	Pyrethrins	NR	0.030	0.004	1	NT
Diazinon	NR	0.030	0.006	0.2	NT	Pyridaben	NR	0.035	0.012	3	NT
Dimethomorph	NR	0.042	0.014	20	NT	Spinetoram	NR	0.030	0.006	3	NT
Etoxazole	NR	0.030	0.008	1.5	NT	Spinosad	NR	0.030	0.004	3	NT
Fenhexamid	NR	0.039	0.013	10	NT	Spiromesifen	NR	0.042	0.014	12	NT
Fenpyroximate	NR	0.030	0.010	2	NT	Spirotetramat	NR	0.041	0.013	13	NT
Flonicamid	NR	0.081	0.027	2	NT	Tebuconazole	NR	0.044	0.014	2	NT
Fludioxonil	NR	0.046	0.015	30	NT	Thiamethoxam	NR	0.055	0.018	4.5	NT
Hexythiazox	NR	0.078	0.026	2	NT	Trifloxystrobin	NR	0.031	0.010	30	NT
Imidacloprid	NR	0.071	0.023	3	NT						

Other Analyte(s):

NR= Not Reported (no analysis was performed), ND= Not Detected (the concentration is less than the Limit of Detection (LOD)). Analytical instrumentation used: LC-MS-MS & GC-MS-MS; samples analyzed according to SOPs PESTMYCO-LC-INST-004 and PEST-GC-INST-003.



Infinite Chemical Analysis Labs
8312 Miramar Mall
San Diego, CA
(858) 623-2740
www.infiniteCAL.com
Lic# C8-000047-LIC

Josh M Swider

Josh Swider
Lab Director, Managing Partner
12/20/2023

Confident LIMS
All Rights Reserved
coa.support@confidentlims.com
(866) 506-5866
www.confidentlims.com



This product has been tested by Infinite Chemical Analysis, LLC using valid testing methodologies and a quality system as required by state law. All LQC samples were performed and met the prescribed acceptance criteria in 16 CCR section 15730, pursuant to 16 CCR section 15726(e)(13). Values reported relate only to the product tested. Infinite Chemical Analysis, LLC makes no claims as to the efficacy, safety or other risks associated with any detected or non-detected levels of any compounds reported herein. This Certificate shall not be reproduced except in full, without the written approval of Infinite Chemical Analysis, LLC.



Certificate of Analysis

QA SAMPLE - INFORMATIONAL ONLY

1 of 3

ICAL ID: 20231219-003
Sample: CA231218-025-065
DOPE GF 16oz
Strain: DOPE GF 16oz
Category: Ingestible
Type: Beverage

DOPE Drinks
Lic. #
N/A
San Diego, CA 92121
Lic. #

Batch#: 001
Batch Size Collected:
Total Batch Size:
Collected: 12/20/2023; Received: 12/20/2023
Completed: 12/20/2023

Moisture NT Water Activity NT	Δ9-THC 5.10 mg/unit	CBD 5.40 mg/unit	Total Cannabinoids 10.50 mg/unit	Total Terpenes NT
--	------------------------	---------------------	-------------------------------------	----------------------

Summary	SOP Used	Date Tested	
Batch	POT-PREP-002	12/19/2023	Pass
Cannabinoids	RS-PREP-001		Complete
Residual Solvents	MICRO-PREP-001		Complete
Microbials	PESTMICO-LC-PREP-001		Complete
Mycotoxins	HM-PREP-001	12/19/2023	Pass
Heavy Metals	PESTMICO-LC-PREP-001 /		Complete
Pesticides	PEST-GC-PREP-001		Complete



Scan to see results

Cannabinoid Profile

1 Unit = can, 480.09 g. 1 mL = 1 g.

Analyte	LOQ (mg/g)	LOD (mg/g)	%	mg/g	mg/mL	mg/unit	Analyte	LOQ (mg/g)	LOD (mg/g)	%	mg/g	mg/mL	mg/unit
THCa	0.0128	0.0043	ND	ND	ND	ND	CBGa	0.0046	0.0015	ND	ND	ND	ND
Δ9-THC	0.0046	0.0010	0.001	0.01	0.01	5.10	CBG	0.0046	0.0005	ND	ND	ND	ND
Δ8-THC	0.0046	0.0014	ND	ND	ND	ND	CBN	0.0046	0.0005	ND	ND	ND	ND
THCV	0.0046	0.0006	ND	ND	ND	ND	Total THC			0.00	0.01	0.01	5.10
CBDa	0.0049	0.0016	ND	ND	ND	ND	Total CBD			0.00	0.01	0.01	5.40
CBD	0.0046	0.0008	0.001	0.01	0.01	5.40	Total			0.00	0.02	0.02	10.50
CBDV	0.0046	0.0004	ND	ND	ND	ND							
CBC	0.0076	0.0025	ND	ND	ND	ND							

Total THC=THCa * 0.877 + Δ9-THC + Δ8-THC + Δ8-THC; Total CBD = CBDa * 0.877 + CBD. LOD= Limit of Detection, LOQ= Limit of Quantitation, ND= Not Detected, NR= Not Reported. Potency is reported on a dry weight basis. Instrumentation and analysis SOPs used: Cannabinoids:UHPLC-DAD(POT-INST-005),Moisture:Moisture Analyzer(MOISTURE-001),Water Activity:Water Activity Meter(WA-INST-002), Foreign Material:Microscope(FOREIGN-001). Density measured at 19-24 °C, Water Activity measured at 0-90% RH. All QA submitted by the client, All CA State Compliance sampled using SAMPL-SOP-001.

Terpene Profile

Analyte	LOQ (mg/g)	LOD (mg/g)	%	mg/g	Analyte	LOQ (mg/g)	LOD (mg/g)	%	mg/g
---------	------------	------------	---	------	---------	------------	------------	---	------

NR= Not Reported (no analysis was performed), ND= Not Detected (the concentration is less than the Limit of Detection (LOD)). Analytical instrumentation used: HS-GC-MS; samples analyzed according to SOP TERP-INST-003.



Infinite Chemical Analysis Labs
8312 Miramar Mall
San Diego, CA
(858) 623-2740
www.infiniteCAL.com
Lic# C8-000047-LIC

Josh M Swider

Josh Swider
Lab Director, Managing Partner
12/20/2023

Confident LIMS
All Rights Reserved
coa.support@confidentlims.com
(866) 506-5866
www.confidentlims.com



This product has been tested by Infinite Chemical Analysis, LLC using valid testing methodologies and a quality system as required by state law. All LQC samples were performed and met the prescribed acceptance criteria in 16 CCR section 15730, pursuant to 16 CCR section 15726(e)(13). Values reported relate only to the product tested. Infinite Chemical Analysis, LLC makes no claims as to the efficacy, safety or other risks associated with any detected or non-detected levels of any compounds reported herein. This Certificate shall not be reproduced except in full, without the written approval of Infinite Chemical Analysis, LLC.



Certificate of Analysis

QA SAMPLE - INFORMATIONAL ONLY

2 of 3

ICAL ID: 20231219-003
Sample: CA231218-025-065
DOPE GF 16oz
Strain: DOPE GF 16oz
Category: Ingestible
Type: Beverage

DOPE Drinks
Lic. #
N/A
San Diego, CA 92121
Lic. #

Batch#: 001
Batch Size Collected:
Total Batch Size:
Collected: 12/20/2023; Received: 12/20/2023
Completed: 12/20/2023

Residual Solvent Analysis

Category 1	LOQ	LOD	Limit	Status	Category 2	LOQ	LOD	Limit	Status	Category 2	LOQ	LOD	Limit	Status			
	µg/g	µg/g	µg/g	µg/g		µg/g	µg/g	µg/g	µg/g		µg/g	µg/g	µg/g	µg/g			
1,2-Dichloro-Ethane	NR	0.264	0.088	1	NT	Acetone	NR	51.246	0.716	5000	NT	n-Hexane	NR	0.281	0.027	290	NT
Benzene	NR	0.052	0.017	1	NT	Acetonitrile	NR	0.42	0.14	410	NT	Isopropanol	NR	2.86	0.614	5000	NT
Chloroform	NR	0.076	0.025	1	NT	Butane	NR	4.849	0.748	5000	NT	Methanol	NR	2.602	0.867	3000	NT
Ethylene Oxide	NR	0.579	0.179	1	NT	Ethanol	NR	7.575	2.525	5000	NT	Pentane	NR	5.075	1.692	5000	NT
Methylene-Chloride	NR	0.729	0.08	1	NT	Ethyl-Acetate	NR	2.288	0.175	5000	NT	Propane	NR	9.709	3.236	5000	NT
Trichloroethene	NR	0.145	0.028	1	NT	Ethyl-Ether	NR	2.869	0.389	5000	NT	Toluene	NR	0.864	0.067	890	NT
						Heptane	NR	2.859	0.496	5000	NT	Xylenes	NR	2.572	0.326	2170	NT

NR= Not Reported (no analysis was performed), ND= Not Detected (the concentration is less than the Limit of Detection (LOD)). Analytical instrumentation used: HS-GC-MS; samples analyzed according to SOP RS-INST-003.

Heavy Metal Screening

	LOQ	LOD	Limit	Status	
µg/g	µg/g	µg/g	µg/g		
Arsenic	ND	0.009	0.003	1.5	Pass
Cadmium	ND	0.002	0.001	0.5	Pass
Lead	ND	0.004	0.001	0.5	Pass
Mercury	ND	0.014	0.005	1.5	Pass

NR= Not Reported (no analysis was performed), ND= Not Detected (the concentration is less than the Limit of Detection (LOD)). Analytical instrumentation used: ICP-MS; samples analyzed according to SOP HM-INST-003.

Microbiological Screening

	Limit	Result	Status
	CFU/g	CFU/g	
Aspergillus flavus		NR	NT
Aspergillus fumigatus		NR	NT
Aspergillus niger		NR	NT
Aspergillus terreus		NR	NT
STEC		NR	NT
Salmonella SPP		NR	NT

ND=Not Detected. Analytical instrumentation used:qPCR; samples analyzed according to SOP MICRO-INST-001.



Infinite Chemical Analysis Labs
8312 Miramar Mall
San Diego, CA
(858) 623-2740
www.infiniteCAL.com
Lic# C8-000047-LIC

Josh M Swider

Josh Swider
Lab Director, Managing Partner
12/20/2023

Confident LIMS
All Rights Reserved
coa.support@confidentlims.com
(866) 506-5866
www.confidentlims.com



This product has been tested by Infinite Chemical Analysis, LLC using valid testing methodologies and a quality system as required by state law. All LQC samples were performed and met the prescribed acceptance criteria in 16 CCR section 15730, pursuant to 16 CCR section 15726(e)(13). Values reported relate only to the product tested. Infinite Chemical Analysis, LLC makes no claims as to the efficacy, safety or other risks associated with any detected or non-detected levels of any compounds reported herein. This Certificate shall not be reproduced except in full, without the written approval of Infinite Chemical Analysis, LLC.



Certificate of Analysis

QA SAMPLE - INFORMATIONAL ONLY

3 of 3

ICAL ID: 20231219-003
Sample: CA231218-025-065
DOPE GF 16oz
Strain: DOPE GF 16oz
Category: Ingestible
Type: Beverage

DOPE Drinks
Lic. #
N/A
San Diego, CA 92121
Lic. #

Batch#: 001
Batch Size Collected:
Total Batch Size:
Collected: 12/20/2023; Received: 12/20/2023
Completed: 12/20/2023

Chemical Residue Screening

Category 1	LOQ	LOD	Status	Mycotoxins	LOQ	LOD	Limit	Status		
	µg/g	µg/g	µg/g		µg/kg	µg/kg	µg/kg			
Aldicarb	NR	0.065	0.022	NT	B1	NR	7.88	2.6	NT	
Carbofuran	NR	0.030	0.009	NT	B2	NR	6.18	2.04	NT	
Chlordane	NR	0.075	0.025	NT	G1	NR	8.99	2.97	NT	
Chlorfenapyr	NR	0.075	0.025	NT	G2	NR	5.72	1.89	NT	
Chlorpyrifos	NR	0.053	0.018	NT	Ochratoxin A	NR	11.72	3.87	20	NT
Coumaphos	NR	0.056	0.018	NT	Total Aflatoxins	NR		20	NT	
Daminozide	NR	0.079	0.026	NT						
Dichlorvos	NR	0.067	0.022	NT						
Dimethoate	NR	0.036	0.012	NT						
Ethoprophos	NR	0.053	0.017	NT						
Etofenprox	NR	0.030	0.008	NT						
Fenoxycarb	NR	0.043	0.014	NT						
Fipronil	NR	0.045	0.015	NT						
Imazalil	NR	0.047	0.016	NT						
Methiocarb	NR	0.047	0.016	NT						
Mevinphos	NR	0.042	0.014	NT						
Paclbutrazol	NR	0.040	0.013	NT						
Parathion Methyl	NR	0.024	0.008	NT						
Propoxur	NR	0.047	0.016	NT						
Spiroxamine	NR	0.032	0.011	NT						
Thiacloprid	NR	0.042	0.014	NT						

Category 2	LOQ	LOD	Limit	Status	Category 2	LOQ	LOD	Limit	Status		
	µg/g	µg/g	µg/g	µg/g		µg/g	µg/g	µg/g	µg/g		
Abamectin	NR	0.030	0.010	0.3	NT	Kresoxim Methyl	NR	0.038	0.012	1	NT
Acephate	NR	0.050	0.016	5	NT	Malathion	NR	0.035	0.012	5	NT
Acequinocyl	NR	0.059	0.019	4	NT	Metalaxyl	NR	0.031	0.010	15	NT
Acetamiprid	NR	0.044	0.015	5	NT	Methomyl	NR	0.048	0.016	0.1	NT
Azoxystrobin	NR	0.029	0.010	40	NT	Myclobutanil	NR	0.055	0.018	9	NT
Bifenazate	NR	0.035	0.012	5	NT	Naled	NR	0.051	0.017	0.5	NT
Bifenthrin	NR	0.040	0.013	0.5	NT	Oxamyl	NR	0.046	0.015	0.3	NT
Boscalid	NR	0.060	0.020	10	NT	Pentachloronitrobenzene	NR	0.054	0.018	0.2	NT
Captan	NR	0.358	0.120	5	NT	Permethrin	NR	0.030	0.008	20	NT
Carbaryl	NR	0.049	0.016	0.5	NT	Phosmet	NR	0.038	0.012	0.2	NT
Chlorantraniliprole	NR	0.063	0.021	40	NT	Piperonyl Butoxide	NR	0.030	0.008	8	NT
Clofentazine	NR	0.039	0.013	0.5	NT	Prallethrin	NR	0.068	0.023	0.4	NT
Cyfluthrin	NR	0.056	0.019	1	NT	Propiconazole	NR	0.059	0.019	20	NT
Cypermethrin	NR	0.044	0.015	1	NT	Pyrethrins	NR	0.030	0.004	1	NT
Diazinon	NR	0.030	0.006	0.2	NT	Pyridaben	NR	0.035	0.012	3	NT
Dimethomorph	NR	0.042	0.014	20	NT	Spinetoram	NR	0.030	0.006	3	NT
Etoxazole	NR	0.030	0.008	1.5	NT	Spinosad	NR	0.030	0.004	3	NT
Fenhexamid	NR	0.039	0.013	10	NT	Spiromesifen	NR	0.042	0.014	12	NT
Fenpyroximate	NR	0.030	0.010	2	NT	Spirotetramat	NR	0.041	0.013	13	NT
Flonicamid	NR	0.081	0.027	2	NT	Tebuconazole	NR	0.044	0.014	2	NT
Fludioxonil	NR	0.046	0.015	30	NT	Thiamethoxam	NR	0.055	0.018	4.5	NT
Hexythiazox	NR	0.078	0.026	2	NT	Trifloxystrobin	NR	0.031	0.010	30	NT
Imidacloprid	NR	0.071	0.023	3	NT						

Other Analyte(s):

NR= Not Reported (no analysis was performed), ND= Not Detected (the concentration is less than the Limit of Detection (LOD)). Analytical instrumentation used: LC-MS-MS & GC-MS-MS; samples analyzed according to SOPs PESTMYCO-LC-INST-004 and PEST-GC-INST-003.



Infinite Chemical Analysis Labs
8312 Miramar Mall
San Diego, CA
(858) 623-2740
www.infiniteCAL.com
Lic# C8-000047-LIC

Josh M Swider

Josh Swider
Lab Director, Managing Partner
12/20/2023

Confident LIMS
All Rights Reserved
coa.support@confidentlims.com
(866) 506-5866
www.confidentlims.com



This product has been tested by Infinite Chemical Analysis, LLC using valid testing methodologies and a quality system as required by state law. All LQC samples were performed and met the prescribed acceptance criteria in 16 CCR section 15730, pursuant to 16 CCR section 15726(e)(13). Values reported relate only to the product tested. Infinite Chemical Analysis, LLC makes no claims as to the efficacy, safety or other risks associated with any detected or non-detected levels of any compounds reported herein. This Certificate shall not be reproduced except in full, without the written approval of Infinite Chemical Analysis, LLC.